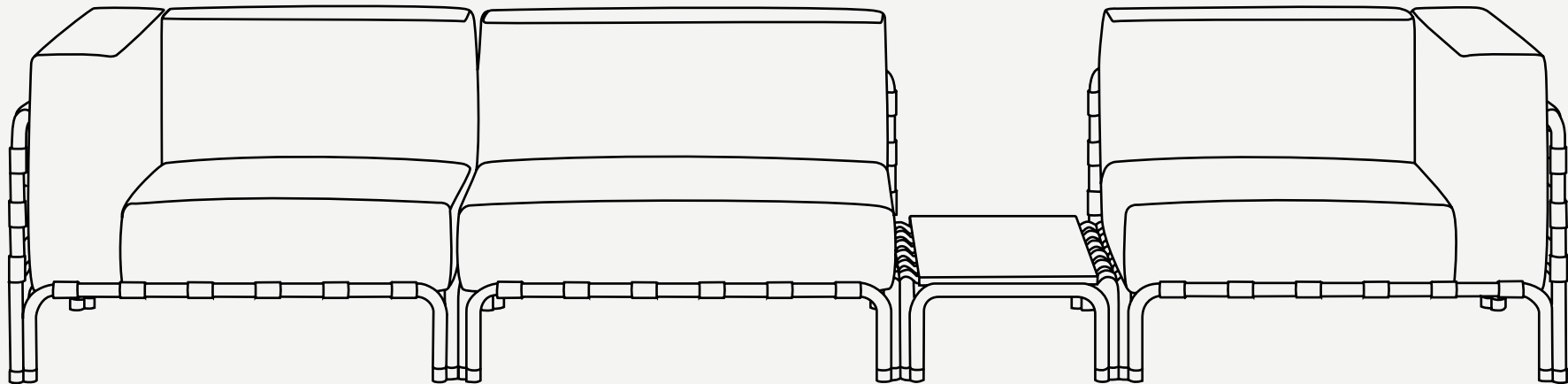
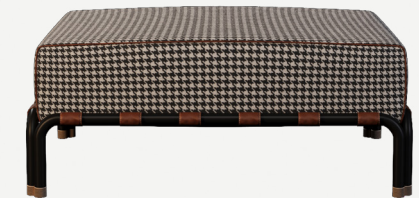
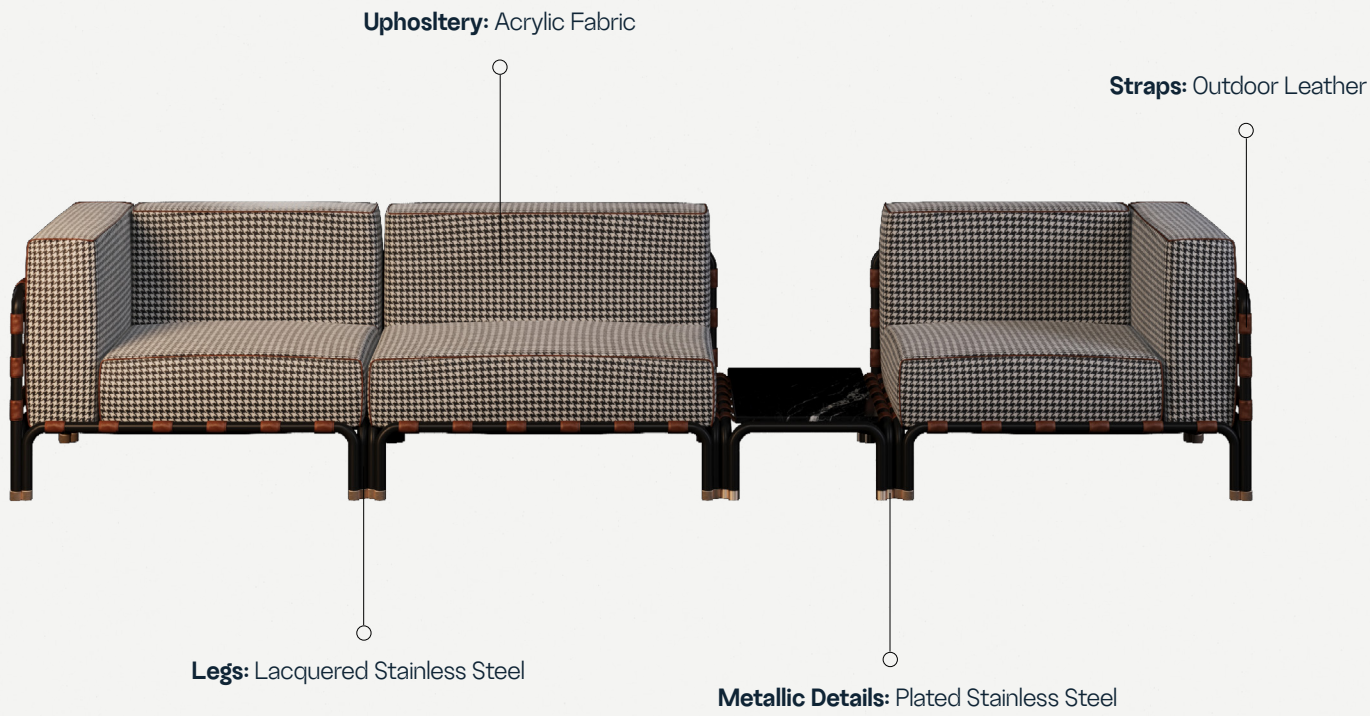


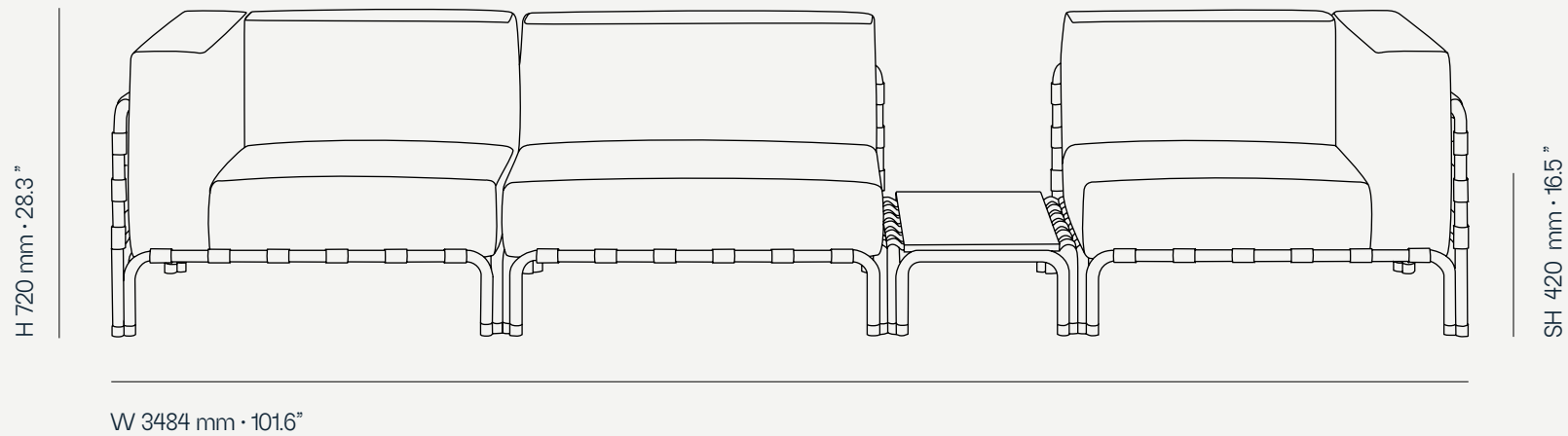
# HOUND COLLECTION

## Hound Modular Sofa





The Hound modular sofa combines classic elegance and durability to take your outdoor space to new levels of design and comfort. Developed using high-quality materials, it is designed to withstand all outdoor conditions without compromising its timeless charm. The structure provides stability and support, and the upholstery in houndstooth fabric in shades of black and white evokes sophistication.



Performance



WATER  
PROOF



SUN  
PROTECTION



LONG LIFE  
CYCLE



UV AND FADING  
RESISTANT

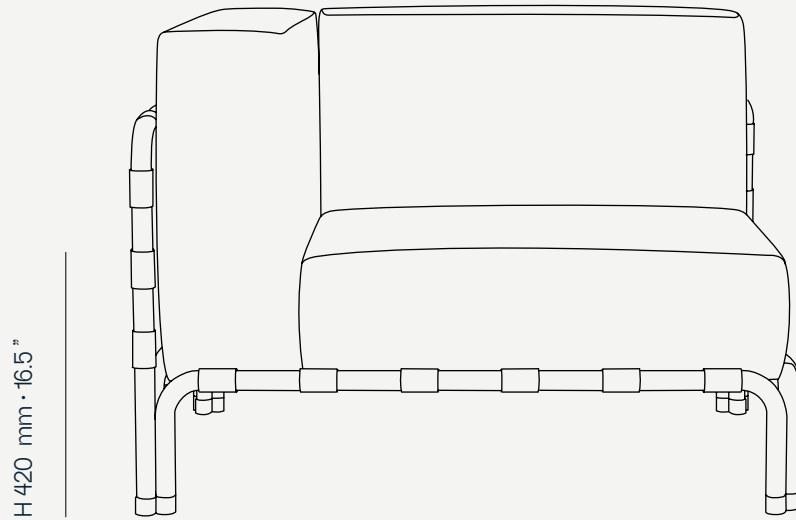


EASY  
TO CLEAN

Included

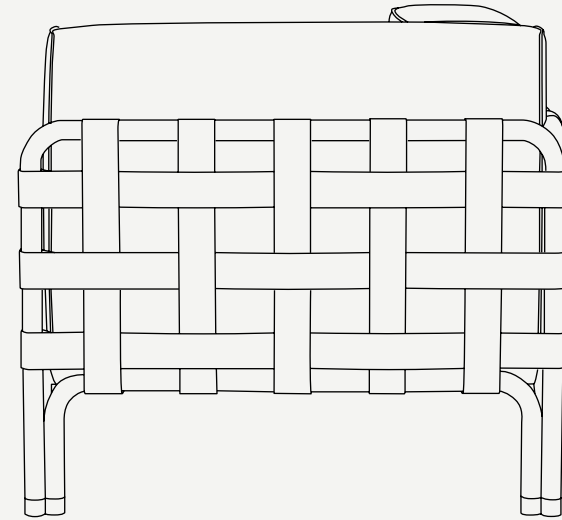


PROTECTION  
COVER



H 420 mm · 16.5"

L 1000mm · 41.3"

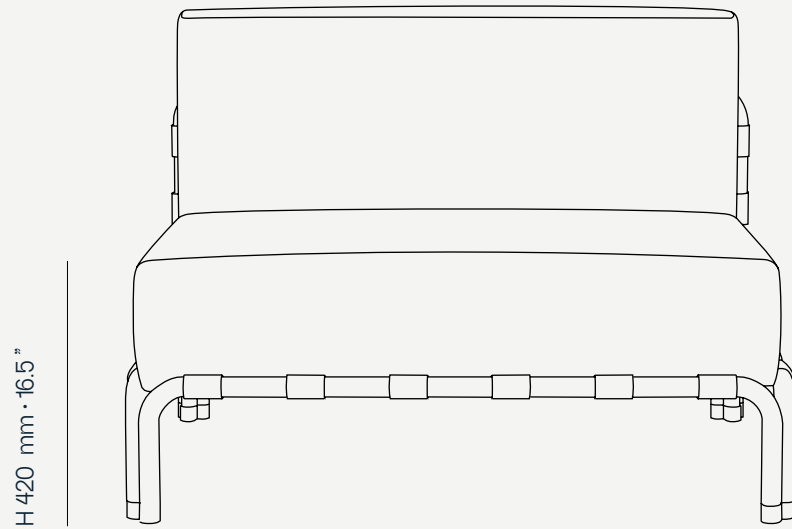


H 720 mm · 28.3"

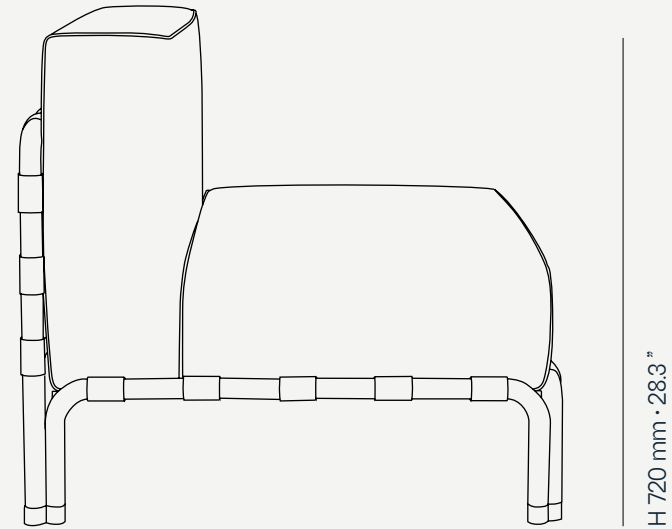
W 800mm · 31.5"



HOUND COLLECTION  
Hound Modular Sofa Single

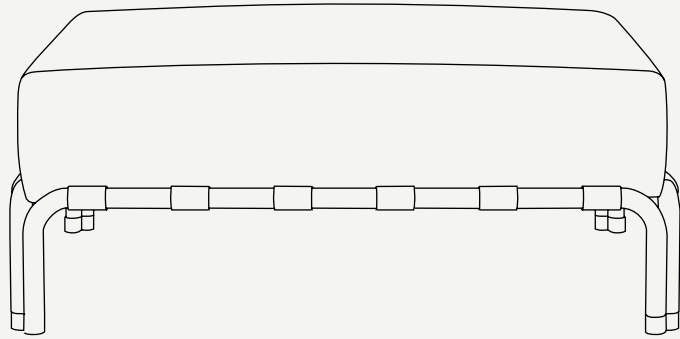


L 1000mm · 41.3"

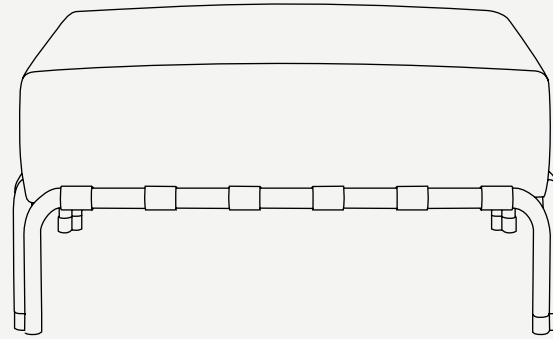


W 792 mm · 31.2"





L 984 mm · 38.7"



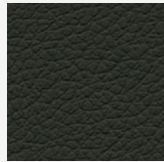
W 784 mm · 31"

H 420 mm · 16.5"



## MATERIALS AND COLOURS

Outdoor  
Leather



GEMINI  
BLACK



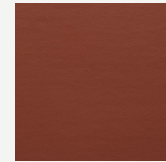
GEMINI  
BROWN



GEMINI  
NAVY



Z FOREST



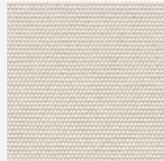
Z TERRACOTA



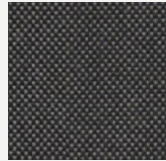
Z MUSHROOM

[View More](#)

Fabrics



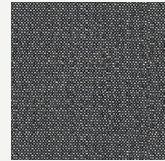
NATTÉ  
CANVAS



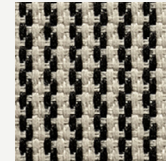
NATTÉ  
CHARCOAL CHINÉ



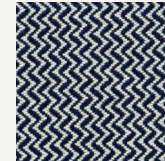
NATTÉ  
GRAUMEL CHALK



SAVANE  
TORNADO



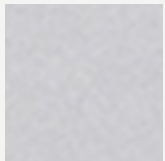
SLALOM  
SALE PEPE



LAGOON WEAVE  
BALTIC BLUE

[View More](#)

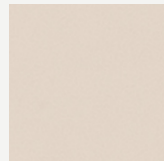
Lacquer



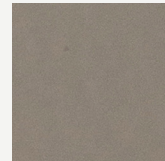
MYFACE WHITE



MYFACE  
BLACK



MYFACE  
ALMOND



MYFACE TAUPE



DEEP  
BROWN



CHOCOLATE  
BROWN

[View More](#)

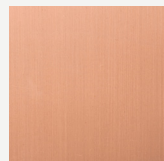
Plating



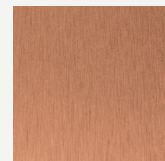
BRUSHED  
BLACK NICKEL



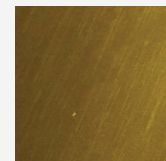
BLACK  
NICKEL PLATED



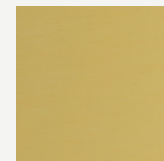
POLISHED  
COPPER PLATED



BRUSHED  
COPPER PLATED



BRUSHED GOLD  
PLATED



POLISHED  
GOLD PLATED

[View More](#)

