

SERENA COLLECTION

Serena XL

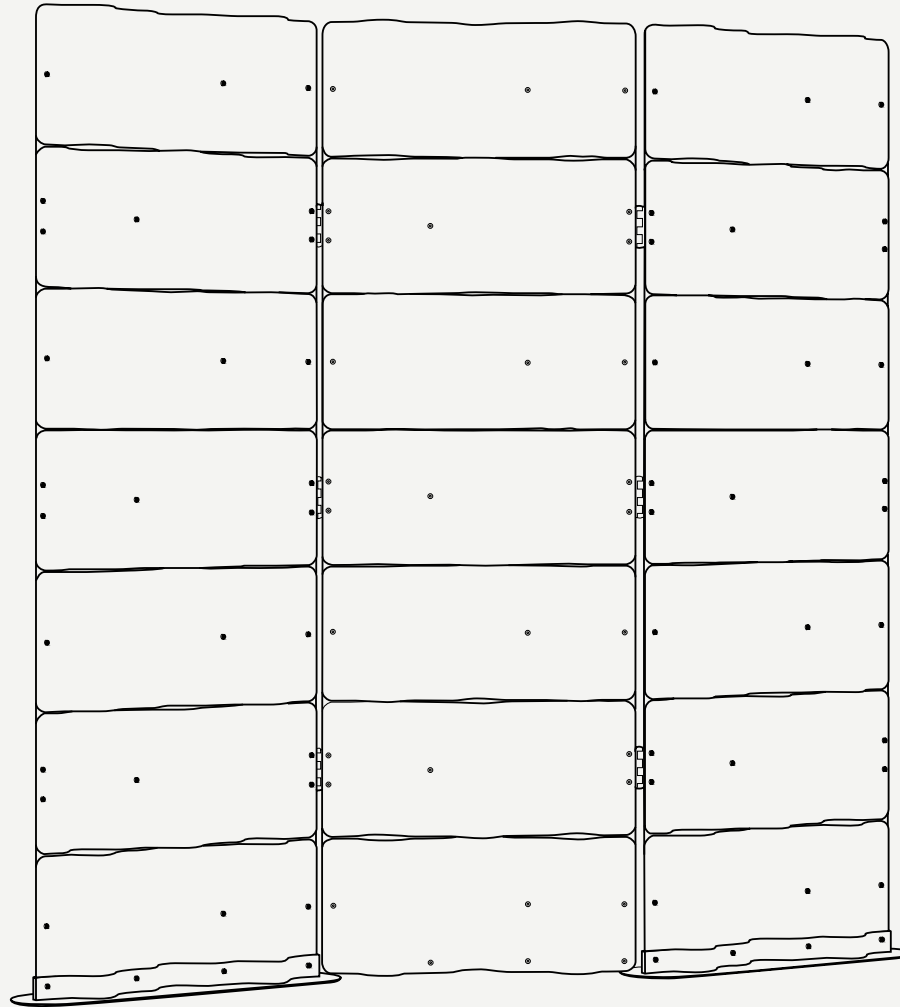
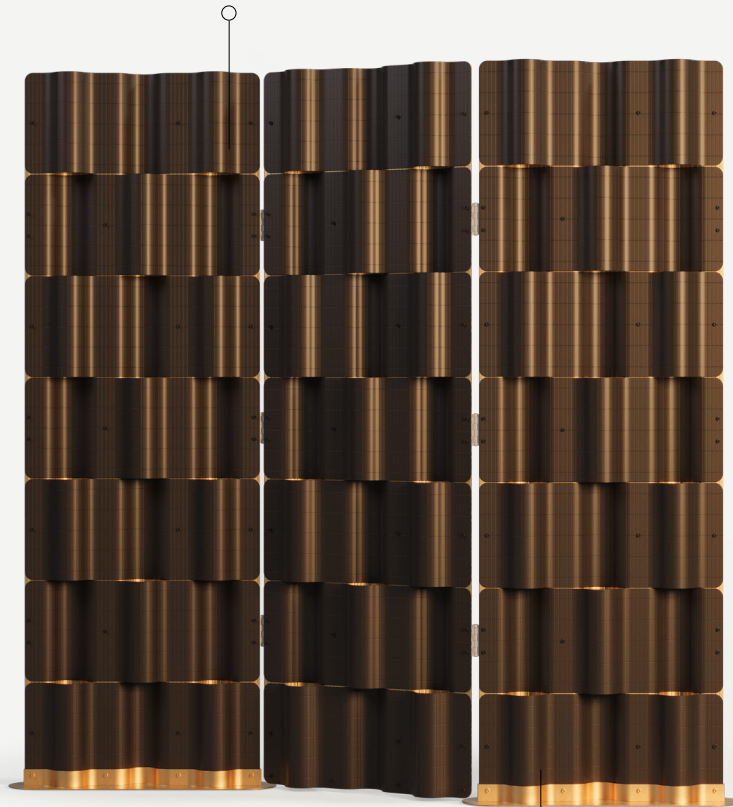
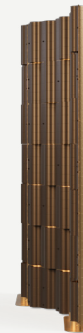


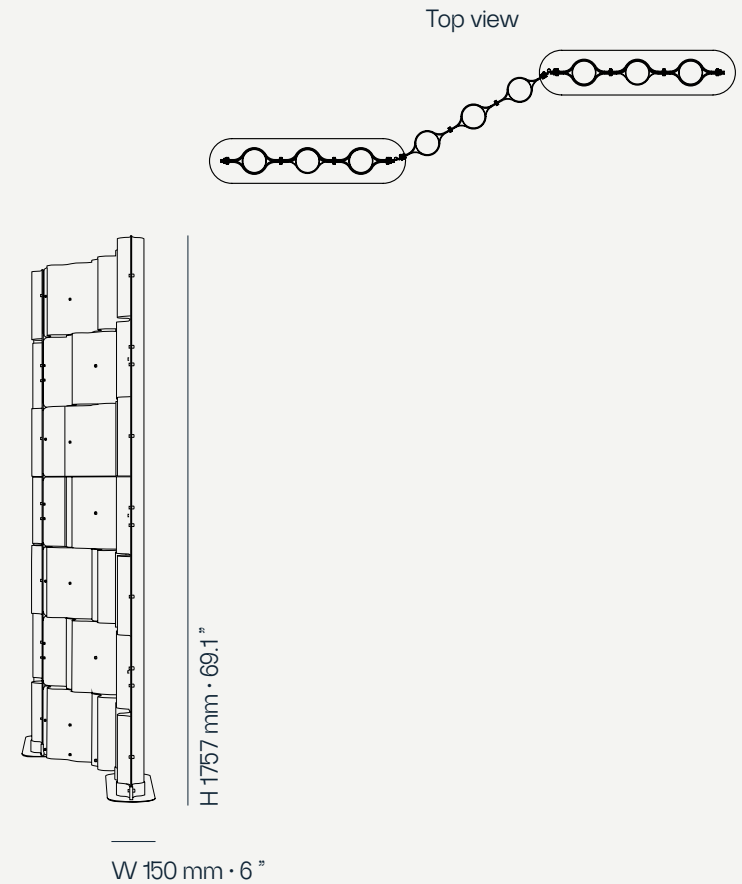
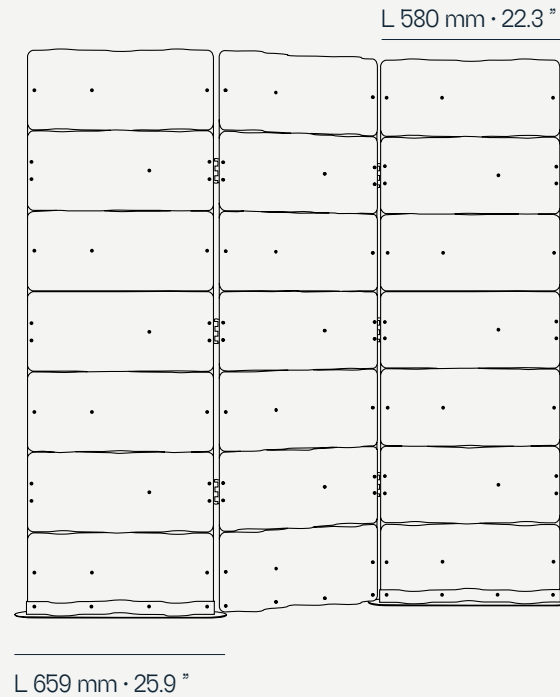
Plate: Lacquered Stainless Steel/Plated Stainless Steel



Structure: Lacquered Stainless Steel/Plated Stainless Steel



Serena is a premium line of outdoor planters designed to add elegance and functionality to gardens, patios and balconies. Inspired by the serene beauty of nature, the XL vase, in addition to being a large planter, also serves as a screen, giving more privacy and warmth to different areas.



Performance



WATER
PROOF



SUN
PROTECTION



LONG LIFE
CYCLE



UV AND FADING
RESISTANT



EASY
TO CLEAN

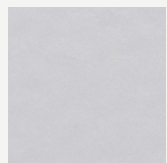
Included



PROTECTION
COVER

MATERIALS AND COLOURS

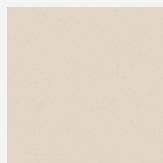
Lacquer



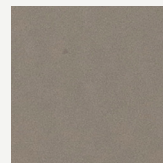
MYFACE WHITE



MYFACE BLACK



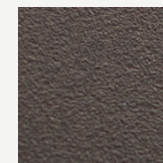
MYFACE ALMOND



MYFACE TAUPE



CHOCOLATE BROWN



DARK BRONZE

[View More](#)

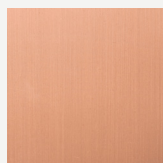
Metal



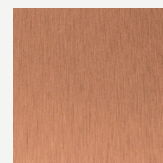
BRUSHED BLACK NICKEL



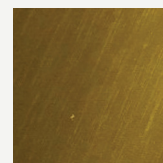
BLACK NICKEL PLATED



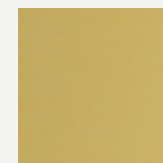
POLISHED COPPER PLATED



BRUSHED COPPER PLATED



BRUSHED GOLD PLATED



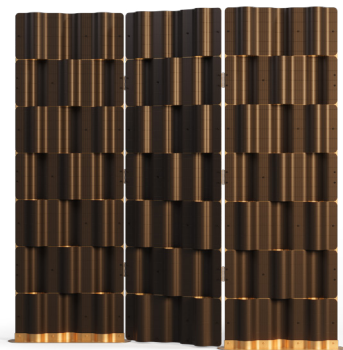
POLISHED GOLD PLATED

[View More](#)

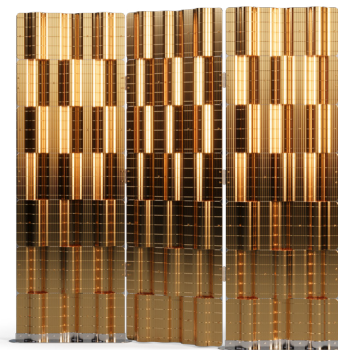


FEELING INSPIRED?

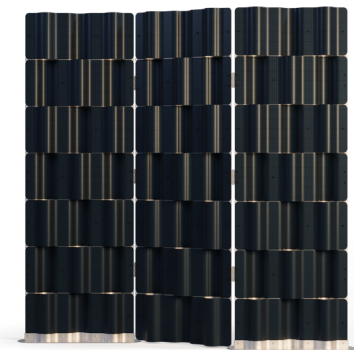
MIX AND MATCH YOUR FAVORITE COLOURS AND TEXTURES AND CREATE YOUR UNIQUE **SERENA XL**.



Structure: Brushed Gold Plated Stainless Steel
Plate: Dark Bronze Lacquered Stainless Steel



Structure: Polished Nickel Plated Stainless Steel
Plate: Gold Plated Stainless Steel



Structure: Brushed Nickel Plated Stainless Steel
Plate: Myface Midnight Blue