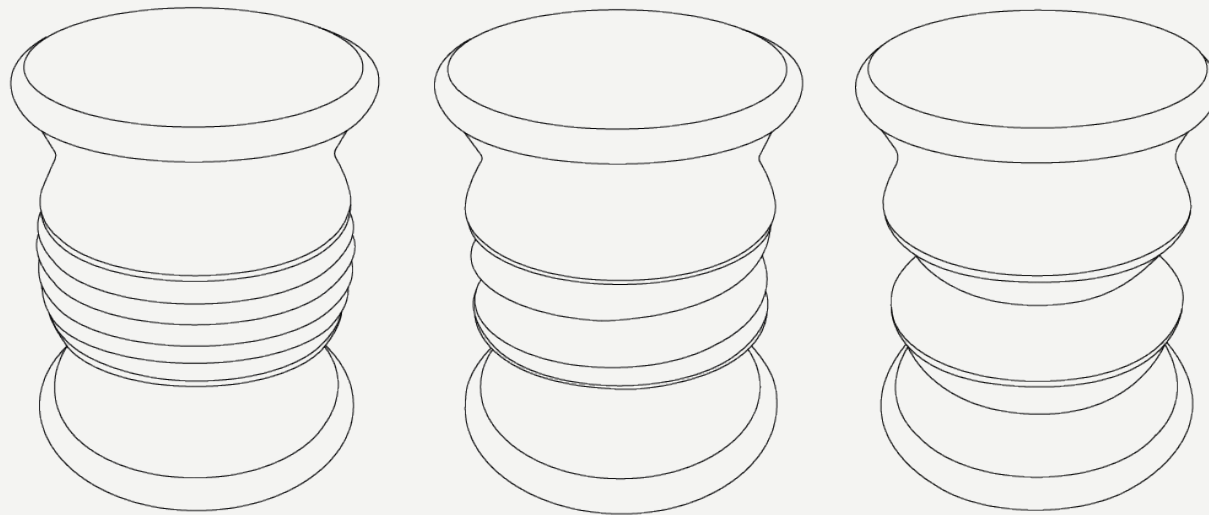


LONIAN COLLECTION

Lonian Stool



Base: Lacquered Stainless Steel



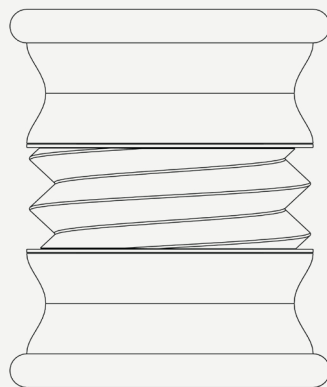
Details: Plated Stainless Steel



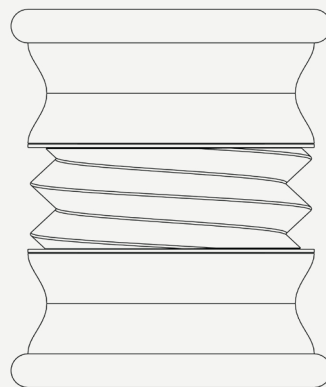
Lonian Twist

The Lonian stool is a unique piece that showcases a fusion of Greek and modern design elements, making it a standout addition to any outdoor space.

One of the most striking features of the Lonian stool is its shape, which is inspired by forms found in Greek architecture. The stool's form and smooth lines create an elegant and fluid design that is both visually pleasing and functional. This design creates a sense of balance and harmony, making it an ideal addition to any outdoor space.



W 380 mm · 15"



W 380 mm · 15"

H 450 mm · 17.7"

Performance



WATER
PROOF



SUN
PROTECTION



LONG LIFE
CYCLE



UV AND FADING
RESISTANT



EASY
TO CLEAN

Included



PROTECTION
COVER

Base: Lacquered and Plated Stainless Steel



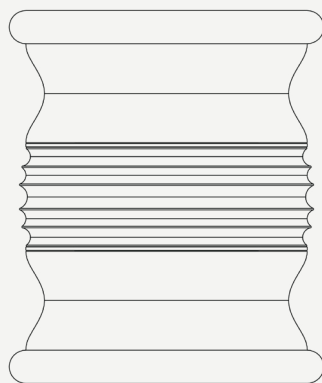
Details: Plated Stainless Steel



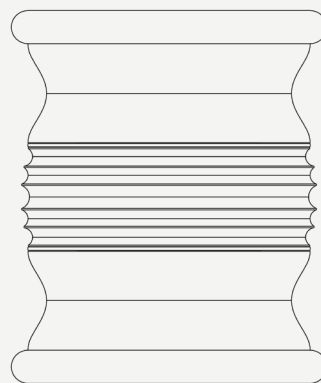
Lonian Tourbillion

The Lonian stool is a unique piece that showcases a fusion of Greek and modern design elements, making it a standout addition to any outdoor space.

One of the most striking features of the Lonian stool is its shape, which is inspired by forms found in Greek architecture. The stool's form and smooth lines create an elegant and fluid design that is both visually pleasing and functional. This design creates a sense of balance and harmony, making it an ideal addition to any outdoor space.



W 380 mm · 15"



W 380 mm · 15"

H 450 mm · 17.7"

Performance



WATER
PROOF



SUN
PROTECTION



LONG LIFE
CYCLE



UV AND FADING
RESISTANT



EASY
TO CLEAN

Included



PROTECTION
COVER

Base: Lacquered and Plated Stainless Steel



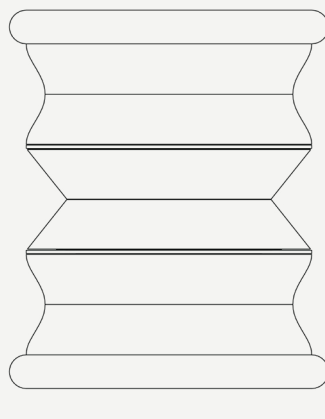
Details: Plated Stainless Steel



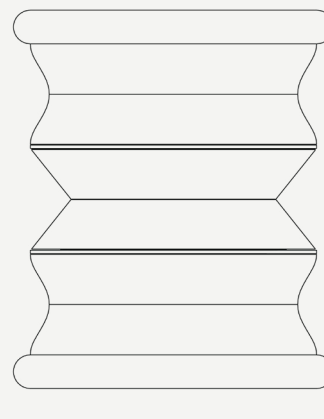
Lonian Mirror

The Lonian stool is a unique piece that showcases a fusion of Greek and modern design elements, making it a standout addition to any outdoor space.

One of the most striking features of the Lonian stool is its shape, which is inspired by forms found in Greek architecture. The stool's form and smooth lines create an elegant and fluid design that is both visually pleasing and functional. This design creates a sense of balance and harmony, making it an ideal addition to any outdoor space.



W 380 mm · 15"



W 380 mm · 15"

H 450 mm · 17.7"

Performance



WATER
PROOF



SUN
PROTECTION



LONG LIFE
CYCLE



UV AND FADING
RESISTANT



EASY
TO CLEAN

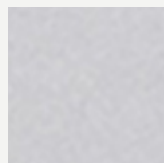
Included



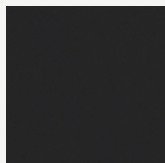
PROTECTION
COVER

MATERIALS AND COLOURS

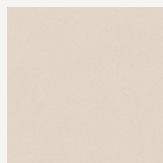
Lacquer



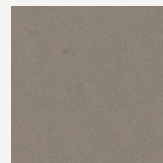
MYFACE WHITE



MYFACE BLACK



MYFACE ALMOND



MYFACE TAUPE



DEEP BROWN



CHOCOLATE BROWN

[View More](#)

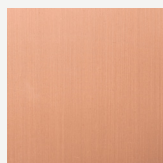
Plating



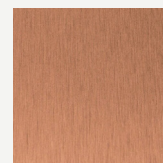
BRUSHED BLACK NICKEL



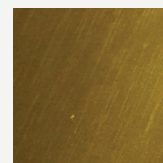
BLACK NICKEL PLATED



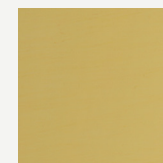
POLISHED COPPER PLATED



BRUSHED COPPER PLATED



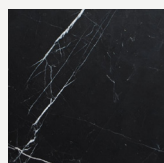
BRUSHED GOLD PLATED



POLISHED GOLD PLATED

[View More](#)

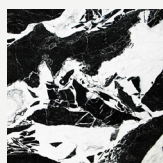
Marble



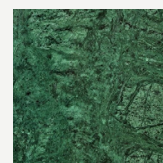
NERO MARQUINA



CARRARA



GRAND ANTIQUE



GUATEMALA



EMPERADOR

[View More](#)





FEELING INSPIRED?

MIX AND MATCH YOUR FAVORITE COLOURS AND TEXTURES AND CREATE YOUR UNIQUE **LONIAN STOOL**.



Top: Bordeaux lacquered fiberglass
Middle: White lacquered fiberglass
Base: Bordeaux lacquered fiberglass
Details: Gold Plated Stainless Steel



Top: Cream lacquered fiberglass
Middle: Cream lacquered fiberglass
Base: Cream lacquered fiberglass
Details: Polished Plated Stainless Steel



Top: Black lacquered fiberglass
Middle: Black lacquered fiberglass
Base: Black lacquered fiberglass
Details: Gold Plated Stainless Steel